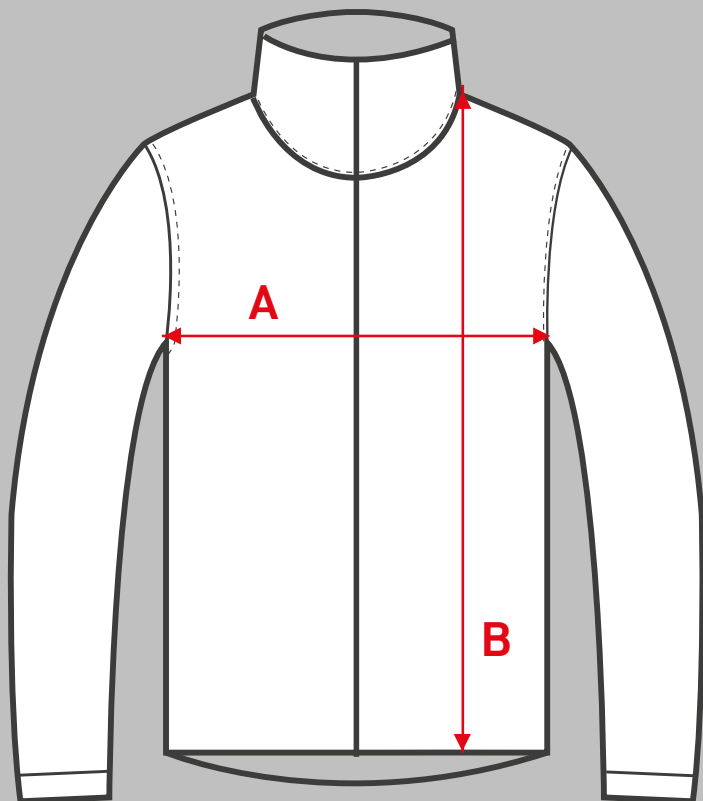




# SIZE GUIDE



**JACKET**  
Quilted Nylon jacket

To check your correct size please use the chart below as a guide.

To make it easy these measurements are shown on the graphic opposite.

Simply take a garment you already own that fits perfectly, lay it flat and measure the points marked A & B, then pick out your correct size based on those measurements from the guide below.

| SIZE | A                 | B                 |
|------|-------------------|-------------------|
| XS   | 23 <sup>1/2</sup> | 26 <sup>1/2</sup> |
| S    | 24                | 27                |
| M    | 24 <sup>1/2</sup> | 29                |
| L    | 25 <sup>1/2</sup> | 29                |
| XL   | 26                | 30                |
| XXL  | 26 <sup>1/2</sup> | 30                |
| XXXL | 28 <sup>1/2</sup> | 30 <sup>1/2</sup> |

All above measurements are shown in inches & are approx - please allow for slight variation

Any further questions please call our sales team on

**01455 292111**